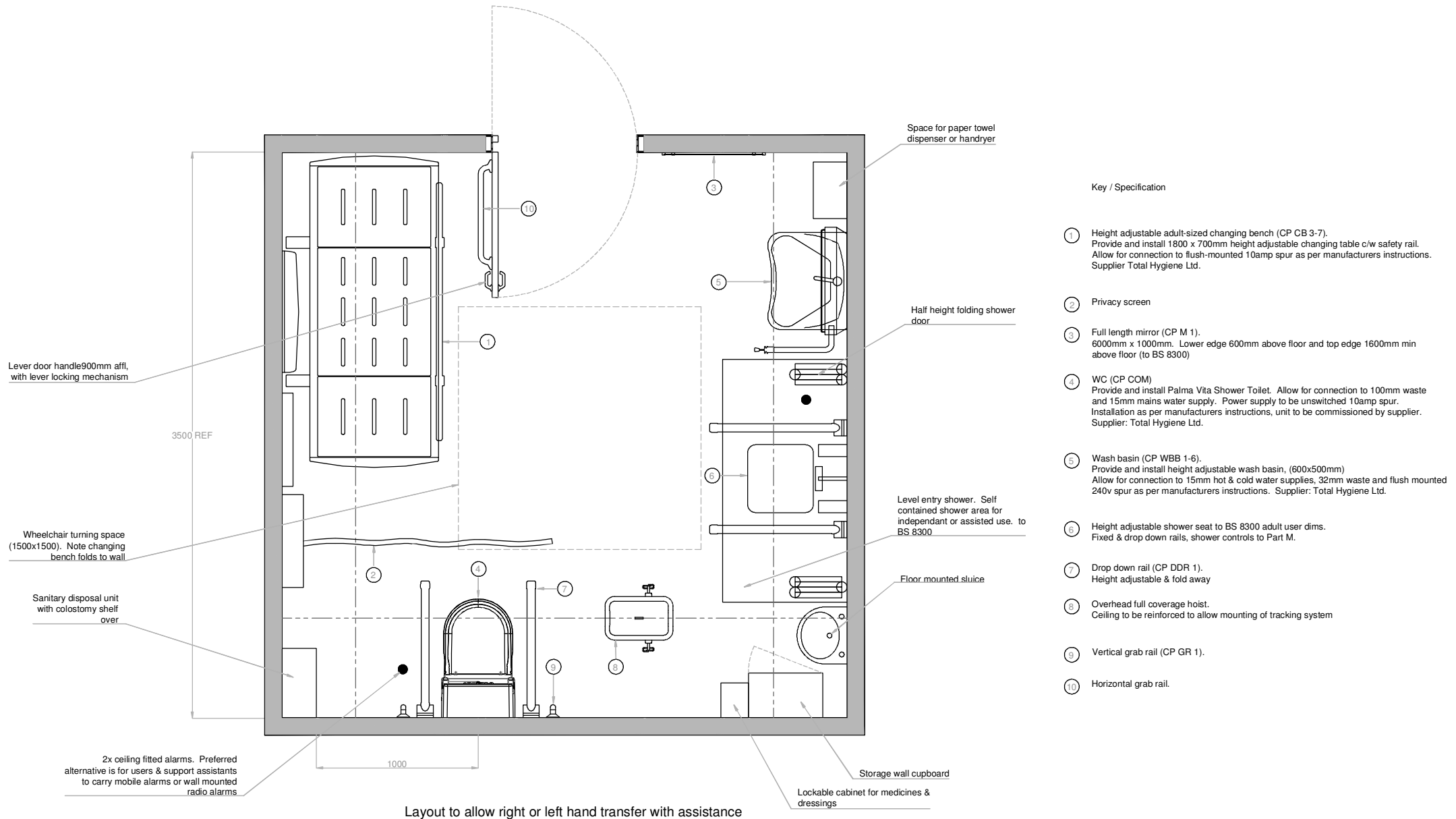


Minimum 12 m2 hygiene room for inclusive primary or secondary school



Key / Specification

- ① Height adjustable adult-sized changing bench (CP CB 3-7). Provide and install 1800 x 700mm height adjustable changing table c/w safety rail. Allow for connection to flush-mounted 10amp spur as per manufacturers instructions. Supplier Total Hygiene Ltd.
- ② Privacy screen
- ③ Full length mirror (CP M 1). 6000mm x 1000mm. Lower edge 600mm above floor and top edge 1600mm min above floor (to BS 8300)
- ④ WC (CP COM). Provide and install Palma Vita Shower Toilet. Allow for connection to 100mm waste and 15mm mains water supply. Power supply to be unswitched 10amp spur. Installation as per manufacturers instructions, unit to be commissioned by supplier. Supplier: Total Hygiene Ltd.
- ⑤ Wash basin (CP WBB 1-6). Provide and install height adjustable wash basin. (600x500mm) Allow for connection to 15mm hot & cold water supplies, 32mm waste and flush mounted 240v spur as per manufacturers instructions. Supplier: Total Hygiene Ltd.
- ⑥ Height adjustable shower seat to BS 8300 adult user dims. Fixed & drop down rails, shower controls to Part M.
- ⑦ Drop down rail (CP DDR 1). Height adjustable & fold away
- ⑧ Overhead full coverage hoist. Ceiling to be reinforced to allow mounting of tracking system
- ⑨ Vertical grab rail (CP GR 1).
- ⑩ Horizontal grab rail.